

Are you juggling with
MULTIPLE BONDS?



FUTURABOND U
can do it **ALL!**



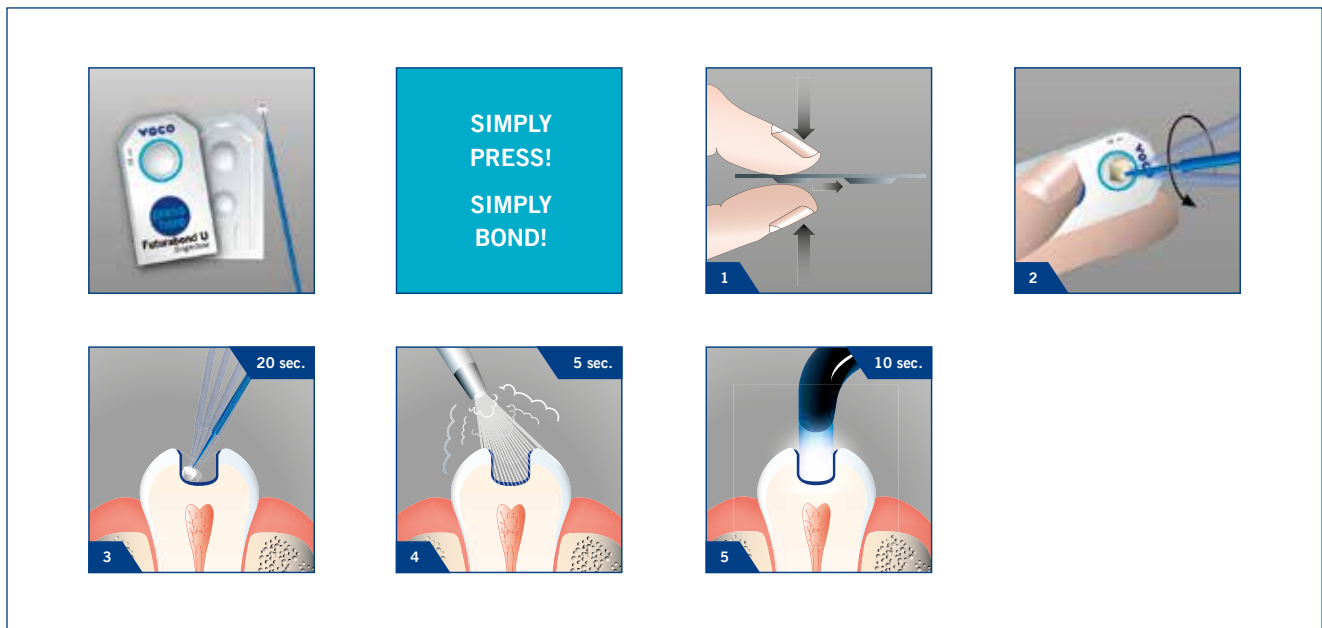
Futurabond U

**THE SINGLEDOSE UNIVERSAL DUAL-CURE
ADHESIVE FOR ALL YOUR ADHESIVE DENTISTRY**

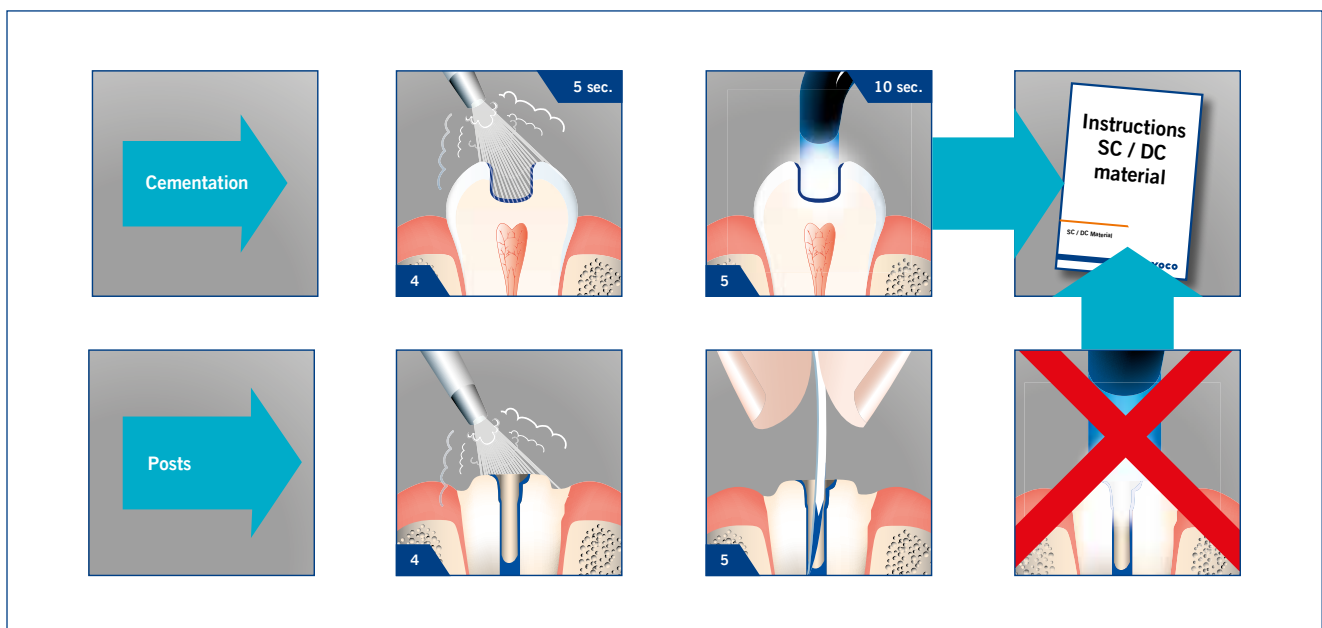
Futurabond U

EASY APPLICATION – ONLY 35 SECONDS WORKING TIME

Direct restoration



Indirect restoration



Futurabond U

TRULY UNIVERSAL – ONE BONDING AGENT FOR ALL YOUR ADHESIVE DENTISTRY

Futurabond U is the first dual-cure universal adhesive in a Single Dose delivery system. Many offices use two to four different bonding systems in order to ensure material compatibility. Futurabond U allows the practitioner to cut this amount down to one, simplifying procedures, making staff training easier, and helping to streamline inventories.

Futurabond U can be used in self-etch, selective-etch or total-etch technique and works with all light-, self- or dual-cure composite based materials. Applied in a single layer, this universal adhesive creates a strong bond to enamel and dentin. At the same time it also bonds to metal, zirconia, aluminum oxide and silicate ceramics without a primer, saving the cost of additional materials.

	Futurabond U (VOCO)	Scotchbond™ Universal* (3M ESPE)	All-Bond™ Universal* (Bisco)	Prime&Bond™ elect* (Dentsply)	iBond SE®* (Heraeus)	Syntac®* with Heliobond* (Ivoclar Vivadent®)
Self-, Selective- and Total-Etch	✓	✓	✓	✓	–	–
Direct restorations	✓	✓	✓	✓	✓	✓
Indirect restorations	✓	✓1)	✓	✓2)	✓3)	✓
Compatible with all light-cure, dual-cure or self-cure composites	✓	✓1)	✓	–	–	✓
Dual-cure in single dose	✓	–	–	–	–	–
Fast application in only one layer	✓	✓	–	✓	✓	–

1) Only with Scotchbond Universal DCA* (dual-cure activator) or RelyX Ultimate* 2) Only with Self Cure Activator* 3) Only in combination with light-cure luting cements
VOCO is not the holder of any mentioned trademarks

Broad Indication Spectrum

Direct restorations of all cavity classes, and core build-ups using any light-cure, dual-cure or self-cure methacrylate-based composite

Indirect restorations using any light-cure, dual-cure or self cure methacrylate-based cement

Intraoral repair of fillings, ceramic veneers and all-ceramic restorations without additional primer

Treatment of **hypersensitive tooth necks**

Protective varnish for glass ionomer cement restorations

Sealing of cavities prior to amalgam restorations or prior to temporary cementation

Cementation of root posts with dual-cure or self cure cements.



Futurabond U

HIGH BOND STRENGTH TO ALL SUBSTRATES WITH EVERY ETCH TECHNIQUE

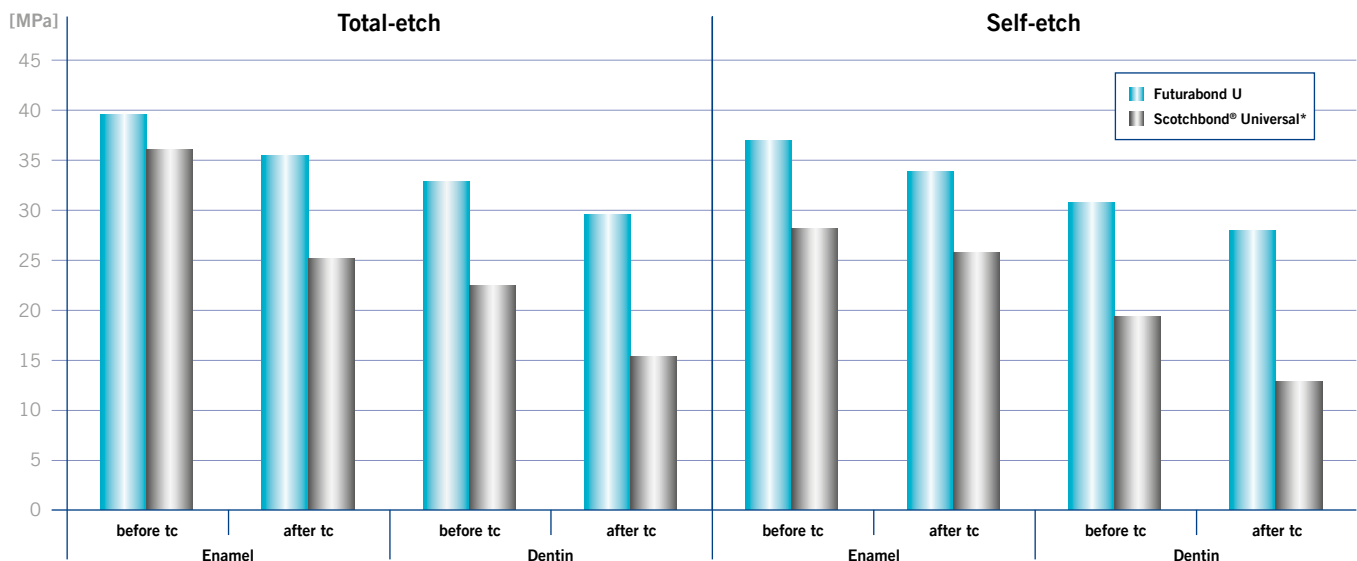
High Bond Strength on Dentin and Enamel for Reliable Results

On fresh cut enamel, an infiltration of the bond takes place simultaneously during the etching process. There is no risk of contamination or destruction of the etching pattern. On dentin, Futurabond U dissolves the smear layer with special hydrophilic and acidic components. This demineralizes the tooth structure and allows the deep infiltration of the collagen fiber net and dentin tubules with the bonding agent. Futurabond U achieves outstanding shear bond strength on dentin and enamel. The shear bond strength of Futurabond U in the self-etch mode on enamel is 36.9 MPa and 30.7 MPa on dentin. Consequently, it reaches the same high bond strength values of leading total-etch systems, yet it is faster and less technique sensitive. By using selective-etch or total-etch these high values can be even increased. In the self-cured mode, Futurabond U achieves significantly higher bond strength than other leading brands.

Free Choice of Etching Technique



Shear Bond Strength on Enamel and Dentin, Before and After Thermocycling (tc)



Source: A. Abdalla, report to VOCO GmbH, 2013

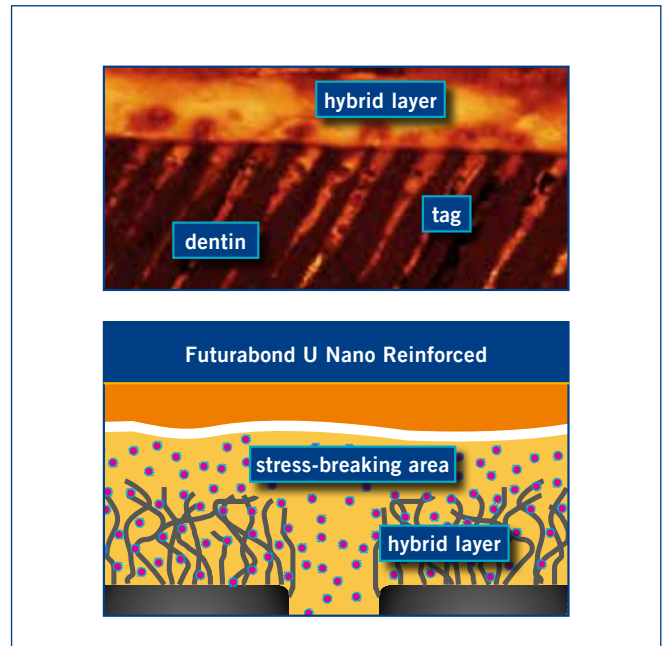
*Scotchbond Universal, All-Bond Universal, Prime&Bond elect, iBond SE, Syntac, Heliobond, Scotchbond Universal DCA, RelyX Ultimate and Self Cure Activator are not registered trademarks of VOCO GmbH.

Futurabond U

NEW TECHNOLOGIES FOR ENHANCED BONDING QUALITY

Nano Technology for Better Performance

The highly functionalized SiO₂ nano particles (Ø 20 nm) in Futurabond U facilitate a cross-link of the resin components and enhance its film-building properties. Thus, the adhesive can optimally wet the exposed collagen fibers and micro-retentive etching pattern on the enamel. Nano particles reinforce the hybrid layer for a long lasting high bond strength. One-coat application of Futurabond U is sufficient to guarantee a permanently stable bond of the composite to the tooth. Futurabond U's consistency ensures a "Stick Immediately Effect" which guarantees that the bond will not be blown out of the cavity while air drying. A combined stress breaking area and hybrid layer of 13 microns is created. This ensures a superior marginal integrity and protection against sensitivities.



Patented Proven *SingleDose* Delivery System Solves the Evaporation Problem of Bottles

VOCO engineers have been working for more than six years to develop a delivery system that is quick and easy to use, but also safe and reliable to guarantee state of the art bonding quality. VOCO's patented *SingleDose* System prevents solvent evaporation – a common problem in a variety of other bottle bonding systems. This ensures reliable bond strength with each use. The one-step activation blisters will not spill in any position. A new *SingleDose* application for every patient prevents any concerns regarding contamination.



Futurabond U

THE ONLY BOND FOR ALL YOUR ADHESIVE DENTISTRY

Advantages

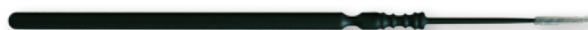
- One adhesive for all your adhesive dentistry
 - Self-etch, selective-etch or total-etch
 - For all direct or indirect materials
 - NO additional activators required for self- or dual-cure modes
 - Bonds to all light-, dual- and self-cure resin materials
 - Bonds to metal, zirconia, aluminum oxide, silicate ceramic without any extra primer
- VOCO's patented *SingleDose* System eliminates the problem of solvent evaporation as a known issue of other bottle systems – this ensures reliable high bond strength with each application.
- Fast and easy one-coat application (apply, dry and cure in 35 sec.)
- Virtually no post-operative sensitivity
- Over 30 MPa of adhesion to dentin and enamel with LC composites while reaching high total-etch adhesion levels with DC and SC composites
- Reinforced with nano particles for permanent bond strength
- No refrigeration required

Futurabond U in practical *SingleDose*

- No solvent evaporation
- Easy, quick and hygienic – one-step activation blister
- No additional devices required
- No spilling in any position

Self-Cure Mode for Post Cementation

Futurabond U cures without any light in the self-cure mode. This is a big advantage for endo applications like root canal cementation. Futurabond U eliminates the problem of the "pooling effect", the blocking of the root canal caused by cured bonding agent. Special Endo Tims allow an easy application of Futurabond U in the root canal. The material will not start to cure before it is in contact with a dual or self-cure resin cement or core build-up composite.



Endo Tim – Brushes for applying bonding agents and varnishes into the root canal

- REF 2246 pack 50 Endo Tim to be used in the root canal
- REF 2247 application brushes – 100 pack



Presentations

- REF 1571 pack 50–0.1 ml *SingleDose*, accessories
- REF 1572 pack 200–0.1 ml *SingleDose*, accessories
- REF 1574 Trial Kit 20–0.1 ml *SingleDose*, Vococid Gel 2ml syringe, accessories

VOCO America Inc.
1285 Rosemont Drive
Indian Land · SC 29707
www.vocoamerica.com
infousa@voco.com

Toll-free phone: 1-888-658-2584
Fax: 1-888-849-3989

