

**EASY TO PLACE ...**



Clip · Clip Flow

## **Clip · Clip Flow**

**LIGHT-CURING FILLING MATERIAL FOR TEMPORARY RESTORATIONS**

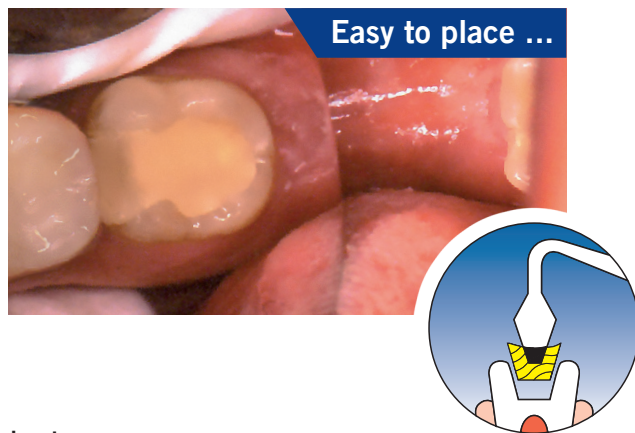


**VOCO**  
THE DENTALISTS

# Clip · Clip Flow

## SAVING TIME IS SAVING MONEY

Clip and Clip Flow are the ideal composite materials for temporary restorations of all types. Their indications range from application within the inlay/onlay technique to repeated temporary obturations in endodontic treatment. Additional indications specific to Clip Flow include relining, as a block out material, protection of the gingival margin and fixing of resin matrices during the placement of restorations.



### Key Advantages

- **Ease of handling**  
Single component in either a packable or flowable viscosity with no mixing time or waste.  
Dispense only what is needed.
- **Low stick, adaptability and excellent durability**  
New resin matrix that flows for easy application.
- **Light-cured and Bulk-fill**  
Clip/Clip Flow with improved translucency has a curing depth of 11 mm.
- **Durable and tight**  
Clip protects the cavity better than competing materials\* and preserves any treatment in the cavity prep.
- **Improved and Increased Utilization**  
Clip Flow provides additional indications to further provide efficient provisional solutions.
- **Easy to remove**  
Simply insert the probe and remove. No burs to damage your preparation, resulting in a consistent fit of your inlays and onlays.
- **Direct application with Clip Caps OR Clip Flow Syringes**  
Clip Caps in pre-dosed Caps of 0.25 gm with any Caps applicator OR Clip Flow in 1.8 gm syringes to make temporary fillings even more convenient: apply directly.
- **Conclusion:**  
Clip was rated as one of the best temporary filling materials by two of the most trusted independent research institutes.\*\* Now Clip Flow has expanded the indication and effectiveness of Clip. Convenient handling and outstanding material properties make it the perfect choice for temporary restorations.

\* P. Beltes et al.; I.A.D.T., VII th World Congress on Dental Trauma 1996, Florence, Italy

\*\* Dental Advisor, Reality



Easy removal in one piece for all indications

Source: Dr. Peter Bastobbe, Mainleus / Germany



Application of Clip Flow into the cavity



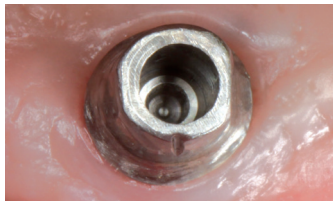
Result

## Clip Flow

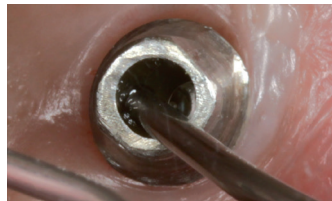
### VERSATILITY THROUGH FLOWABILITY

#### Implant Abutments

The aperture for the connecting screw on the implant-abutment interface is frequently given a temporary seal before the final cementation of the restoration onto the abutment. This prevents cement from entering the aperture and thus sealing it permanently. With Clip Flow, this can be prevented in a quick, comfortable and most importantly, reversible manner.



Abutment with open aperture



Aperture sealed with Clip Flow



Light-curing of the material



Finished seal

#### Clip Flow as a block out material

Before taking impressions, for example, Clip Flow is the ideal material for blocking out retentive areas in the dental arch. With Clip Flow, taking impressions can be simplified considerably.



Application of Clip Flow



Polymerization



Blocked out interdental spaces



Removal of Clip Flow

#### Gingiva protection with Clip Flow

To provide an example, in order to protect the teeth during the application of in-office whitening products, Clip Flow can be used for gingiva protection. It acts as a barrier for the whitening product and protects the surrounding soft tissue and teeth. Covering the gingival margin with Clip Flow is quick and simple.



Application of gingiva protection



Removal in one piece

#### Clip Flow as a relining material

Clip Flow is excellent for relining temporary crowns and bridges, guaranteeing a perfect fit until the final restoration is ready for placement.

#### Repair of resin matrices with Clip Flow

Clip Flow allows the simple repair of resin matrices to optimally hold them in place during placement of the filling.



Fixing the matrix



Restoring form and function of the tooth

Source: Dr. Walter Denner, Fulda / Germany



## Clip · Clip Flow

### EASY-TO-USE LIGHT-CURED FILLING MATERIAL FOR TEMPORARY RESTORATIONS

#### Indications

All types of temporary restorations  
Temporary protection in inlay / onlay technique

#### Additional indications Clip Flow

Sealing of openings for implant screws  
Relining material for temporary crowns and bridges  
Block out material for retentive areas in the dental arch, e.g. before taking impressions  
Covering of the gingival margin  
Fixing of resin matrices during filling placement  
Temporary filling of cavities

#### Advantages

- Easy to place – easy to remove in one piece
- No damage to preparation boundaries
- Durable and saliva-proof
- Non-sticky
- Time-saving through light-curing
- Elastic
- Flowable (Clip Flow)
- NDT® syringe (Clip Flow)

Technical Data (Clip)	
Depth of curing	11mm
Surface hardness	90 Shore A
Diametrical tensile strength	27MPa
Water solubility (14 days)	0.46%
Marginal seal behavior	0.5 VAS

#### Presentation

##### Clip

REF 1284 Syringe 2 × 4 gm  
REF 1285 Syringe 3 × 4 gm  
REF 1287 Caps 25 × 0.2 gm  
REF 9301 Dispenser – Caps

##### Clip Flow

REF 1282 Syringe 2 × 1.8 gm, accessories  
REF 2148 Application tips type 46, 100 pcs.



VOCO America Inc.  
1285 Rosemont Drive  
Indian Land · SC 29707

www.vocoamerica.com  
infousa@voco.com

Toll-free phone: 1-888-658-2584  
Fax: 1-888-849-3989

Available from: