



**TOP PRODUCTS BY VOCO –  
RELIABLE AND INNOVATIVE**

# World's first composite with thermo-viscous-technology

- Innovative material  
By pre-warming, the material is flowable during application and can be sculpted immediately afterwards (thermo-viscous-technology)
- Time-saving  
Efficient restorations with only one material
- Excellent handling  
Bubble-free application with a narrow and long cannula



... warm it



... flow it



... sculpt it



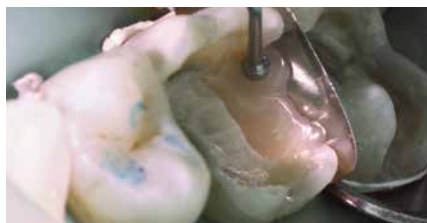
## VisCalor® bulk

REF 6062 Set Dispenser,  
Caps 80 × 0.25 g  
(16 × universal, 16 × A1,  
16 × A2, 32 × A3),  
VisCalor Dispenser

REF 6063 Set Caps Warmer  
Caps 80 × 0.25 g  
(16 × universal, 16 × A1,  
16 × A2, 32 × A3),  
Caps Warmer



Applying the heated VisCalor bulk with its superb flowable consistency and slender cannula



Adapting the sculptable VisCalor bulk



Polished and rehydrated class II cavities the day after filling placement

Source: Dr. Fernando Feitosa, Americana / Brazil

## Celalux® 3

- State-of-the-art LED technology with high light intensity (approx. 1,300 mW / cm<sup>2</sup>)
- Wavelength range 450 - 480 nm
- Slim and ergonomic design (pen-shaped); weight of the handpiece, including device base and light guide, weighs only 70 g
- Indicates how much time has elapsed by vibrating at the start, and again after 10 s and 20 s, instead of the acoustic signals previously used
- Easy to handle, cordless
- Autoclavable 8 mm light guide
- The spare device base supplied ensures the device is always ready for use
- Battery is very easy to change

REF 9090 Celalux 3 (handpiece, battery charger, power cord with interchangeable mains adapters, 2 Device Bases, 8 mm light guide, rubber shield, operating instructions)



# Take FIVE to match them all!

- All 16 VITA® classical shades can be covered with just 5 Cluster-Shades
- Only 10 seconds light-curing for all shades
- Excellent biocompatible, as no classic monomers are contained
- By far the lowest polymerisation shrinkage (1.25 vol.%)
- Compatible with all conventional bonding agents



## Admira® Fusion 5

- REF 6243 Trial pack  
10 × 0.2 g Caps (2 each of × A1, A2, A3, A3.5, A4),  
10 × Futurabond U *SingleDose*,  
shade card, accessories
- REF 6225 Set Syringe 5 × 3 g (A1, A2, A3,  
A3.5, A4), shade card
- REF 6235 Caps 75 × 0.2 g (15 each  
of × A1, A2, A3, A3.5, A4),  
shade card

### Admira Fusion 5

VITA®  
classical

A1				A2		A3			A3.5				A4		
A1	B1	C1	D2	A2	B2	A3	B3	D4	A3.5	C2	C3	D3	B4	A4	C4



My restoration:  
Biocompatible,  
naturally!



## Admira® Fusion

- REF 2750 Set + bond  
syringe 5 × 3 g  
(A2, A3, GA3.25, A3.5,  
Admira Fusion x-tra),  
shade guide + Futurabond U  
*SingleDose* 20 pcs., accessories
- REF 2780 Set + bond  
Caps 75 × 0.2 g (15 each of  
A2, A3, GA3.25, A3.5,  
Admira Fusion x-tra), shade  
guide + Futurabond U  
*SingleDose* 20 pcs., accessories

## Admira® Fusion Flow

- REF 2816 Set syringe 5 × 2 g  
(A1, A2, A3, A3.5, WO)  
shade guide, accessories

## Admira® Fusion x-base

- REF 2812 Syringe 2 × 2 g universal

## Admira® Fusion x-tra

- REF 2810 Syringe 3 g universal  
REF 2811 Caps 15 × 0.2 g universal



# 'I am convinced by GrandioSO's similarity to natural teeth!'

Dr. H. Gräber, Munich, Germany

## Grandio®SO

Our composite for high demands. The filling material scores with tooth-like properties combined with high user-friendliness and natural aesthetics.

- Universal nano-hybrid restorative material
- Excellent physical properties  
Very high filler content of 89 % w/w
- Universal  
For the highest demands in both the anterior and posterior tooth regions

REF 2600 Set syringe 5 × 4 g (A2, A3, A3.5, GA3.25, GA5), shade guide

REF 2640 Set Caps 80 × 0.25 g (16 each of A2, A3, A3.5, GA3.25, GA5), shade guide

Syringe 4 g / Caps 16 × 0.25 g<sup>1</sup>



## Grandio®SO Light Flow

- Flowable nano-hybrid restorative material – low viscous
- Precise application thanks to an extra-fine cannula and therefore optimally suitable for hard-to-reach areas and small cavities



REF 2585 Set syringe 5 × 2 g (A1, A2, A3, A3.5, WO), shade guide, accessories

Syringe 2 × 2 g<sup>1</sup>

## Grandio®SO Flow

- Flowable universal nano-hybrid restorative material – medium viscous
- Outstanding flow behaviour, universal application and precise application



REF 2720 Set syringe 5 × 2 g (A1, A2, A3, A3.5, WO), shade guide, accessories

Syringe 2 × 2 g / Caps 16 × 0.25 g<sup>1</sup>

## Grandio®SO Heavy Flow

- Flowable universal nano-hybrid restorative material – highly viscous
- Increased stability, i.e. no undesirable runoff and universal application



REF 2680 Set syringe 5 × 2 g (A2, A3, A3.5, WO, GA5), shade guide, accessories

Syringe 2 × 2 g / Caps 16 × 0.25 g<sup>1</sup>

<sup>1</sup>Further trading forms and single shades can be found under [www.voco.dental](http://www.voco.dental)

# Universal adhesive – It's your choice!

A bonding for all cases! With Futurabond U, the only dual-curing universal adhesive, we have a clear mission: To provide you a bonding which offers only advantages and reliability and makes any other adhesive system in your practice redundant.

## Futurabond® U

- Dual-curing universal adhesive
- One bond for all cases – makes all other adhesives in the practice redundant
- Self-etch, selective-etch or total-etch – free choice for the practitioner
- Outstanding versatility of application



REF 1571 SingleDose 50 pcs., accessories

REF 1572 SingleDose 200 pcs., accessories

REF 1577 Futurabond U bottle, bottle 5 ml

REF 1578 Futurabond U bottle DCA, bottle 2 ml

### Self-etch



### Selective-etch



### Total-etch



**Each drop a win!**

**A universal adhesive that is right for every situation.**

## Futurabond® M+

- Universal adhesive
- Can be applied with or without phosphoric acid etching
- Excellently suitable for direct or indirect restorations
- Secure adhesion to various materials such as metals, zirconium dioxide or aluminium oxide, as well as silicate ceramics, without additional primer



REF 1515 Bottle 5 ml, accessories

REF 1519 Single bottle 5 ml

REF 1516 Bottle 3 x 5 ml

REF 1518 Futurabond M+ DCA, bottle 2 ml

**Futurabond DC is the proven and popular self-etch-bond for the application under all light, self or dual-curing restorative materials – for a strong and permanent adhesion!**

## Futurabond® DC

- Dual-curing self-etch-bond reinforced with nano-fillers
- Chemical-curing in areas inaccessible with a curing light
- Futurabond DC achieves the same adhesive properties as total-etch preparations without separate etching of the tooth substance
- Moisture tolerant



REF 1164 SingleDose 50 pcs., accessories

REF 1165 SingleDose 200 pcs., accessories

<sup>1</sup>Further trading forms and single shades can be found under [www.voco.dental](http://www.voco.dental)

# Grandio – The classic nano-hybrid

With Grandio, VOCO has set standards in 2003 as the world's first supplier of a new generation of nano-hybrid composites. Proven millions of times on all continents, Grandio is still the nano-composite of choice! The innovative nano-technology makes Grandio a high-performance composite, which is known for its physical qualities as well as its optimal handling properties – everywhere.

## Grandio®

- Ideal consistency and simplest handling
- E-modulus comparable to natural tooth substance
- Pronounced abrasion resistance and chewing stability
- High biocompatibility thanks to low resin content



REF 1800 Set syringe 5 × 4 g (A1, A2, A3, A3.5, B2), shade guide

Further trading forms and single shades can be found under [www.voco.dental](http://www.voco.dental)



Initial situation

Source: Dr. Marcelo Balsamo



Preparation and lining with Grandio Flow



Finished restoration with Grandio

# Grandio Flow – also unrivalled as flowable!

From the restoration of minimally invasive cavities to extended fissure sealing and the repair of veneers - with Grandio Flow, all the advantages of Grandio can also be used in the flowable version. Thanks to its clear technological advantage, Grandio Flow leaves conventional flowables far behind: The resin content is up to 50% lower than that of conventional flowables, which leads to top results in the areas of surface hardness and abrasion resistance.

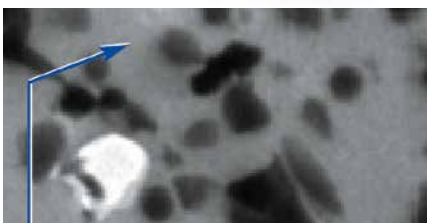
## Grandio® Flow

- Optimal flowability
- High filler content of 80 % w/w
- Exact shade match to Grandio
- Microhybrid composite – like physical properties

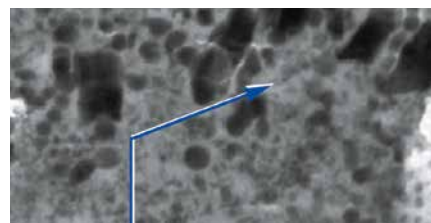


REF 1860 Set syringe 8 × 2 g (A1, 2 × A2, 2 × A3, A3.5, B2, 0A2), shade guide, accessories

Further trading forms and single shades can be found under [www.voco.dental](http://www.voco.dental)



Traditional flowable, unfilled area



Grandio Flow, filled with nano-particles

# Amaris – for brilliant results

Naturally simple, simply beautiful! When it comes to the highest aesthetics, we recommend Amaris. The special thing about this composite of the extra class: The system allows you a high degree of flexibility in shading as the two coordinated working steps lets you change the shade continuously – even during layering! Thus, a highly aesthetic result does not only depend on the initial shade selection.

## Amaris®

- Optimal polishability, abrasion resistant and glossy
- Two easy steps, low material costs
- Nature-identical layering
- Covering of the entire shade range through the combination of only eight components



REF 1949 Starter set Caps 32 × 0.25 g (4 each of O1, O2, O3, O4, O5, TL, TN, TD), Amaris Flow syringe 2 × 1.8 g (HT, HO), shade guide, accessories

REF 1930 Set syringe 8 × 4 g (O1, O2, O3, O4, O5, TL, TN, TD), Amaris Flow syringe 2 × 1.8 g (HT, HO), shade guide, accessories

Further trading forms and single shades can be found under [www.voco.dental](http://www.voco.dental)



Application of Amaris TL to reconstruct the palatal enamel portion

Source: Dr. Sânzio Marques – Passos, Brazil



Modelling with Amaris O1, natural appearance shaping of the mamelons with Amaris Flow HO



Completed anterior restoration

# x-tra fil: Amalgam – no thanks!

To ensure that primary care is provided within optimised treatment time and with best price-performance ratio, VOCO's light-curing posterior bulk-fill restorative x-tra fil offers more than just an alternative. The material is particularly easy to work with, and the attractive aesthetic result is convincing.

## x-tra fil®

- Curing depth 4 mm
- Only 10 s curing time per layer
- Universal shade
- Reduced working time, especially in combination with any Futurabond *SingleDose* adhesive



REF 1739 Syringe 10 × 5 g

REF 1740 Syringe 5 g

REF 1741 Caps 20 × 0.25 g

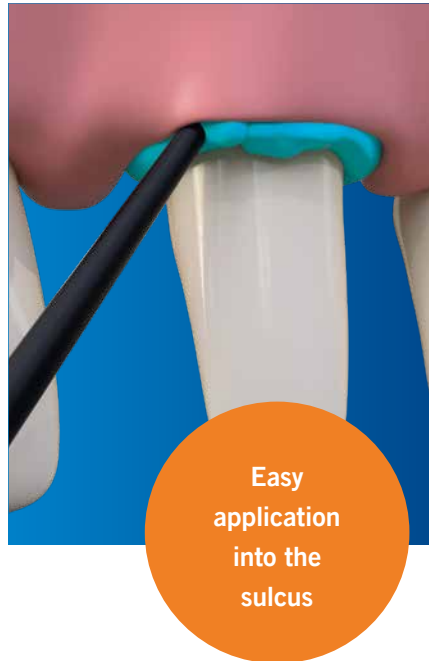
<sup>2</sup>based on sales figures

# The cord from the capsule

The **VOCO Retraction Paste** is your indispensable helper for the effective temporary widening and dry gingival sulcus. This creates the condition for successful conventional or digital impressions.

## VOCO Retraction Paste

- Astringent paste for an effective temporary widening and dry gingival sulcus
- Thin cannula with flexible tip – easy and pinpoint application into the sulcus
- Viscosity Change – paste consistency varies during application and sulcus widening
- Good visibility – contrasty to the gingiva



REF 1012 Caps 25 × 0,3 g

REF 1013 Caps 100 × 0,3 g

# Impressively precise!

Precisely fitted dentures require a material that ensures optimal impression taking with its properties – from the beginning to the pouring. This service concept has been consistently implemented in **V-Posil**.

## V-Posil®

- Precision impression material, VPS
- Highly hydrophilic A-silicone for maximum precision
- Long working time combined with a short intraoral setting time
- Exceptional toughness and recovery after deformation ensure safety during or after removal
- Good hydrophilicity, even after setting, renders pouring and thus the prosthetic restoration perfect



### Starter-Set Putty Fast / Light Fast

REF 2991  
Putty Fast Cartridge 2 × 380 ml  
Light Fast Cartridge 2 × 50 ml

### Starter-Set Heavy Soft Fast / Light Fast

REF 2985  
Heavy Soft Fast Cartridge 2 × 380 ml  
Light Fast Cartridge 2 × 50 ml

### Starter-Set Mono Fast / Light Fast

REF 2987  
Mono Fast Cartridge 2 × 380 ml  
Light Fast Cartridge 2 × 50 ml

### Starter-Set Putty Fast / Light Fast

REF 2984  
Putty Fast Jar 2 × 450 ml  
Light Fast Cartridge 2 × 50 ml

### Starter-Set Putty Soft Fast / Light Fast

REF 2904  
Putty Soft Fast Jar 2 × 450 ml  
Light Fast Cartridge 2 × 50 ml

# Linings for every day

A good lining is the base for a successful restoration. Whether for direct or indirect capping of the pulp or light-curing. With our linings you get to choose depending on the situation.

## Ionoseal®

- Light-curing glass ionomer composite liner
- Ready-to-use one-component material
- Time-saving: light-curing in seconds
- Quick and hygienic application



REF 1326 Syringe 3 × 2.5 g, accessories



Prepared cavity

Source: Dr. Marcelo Balsamo



Direct application Ionoseal



Finished lining



Final restoration

## Calcicur®

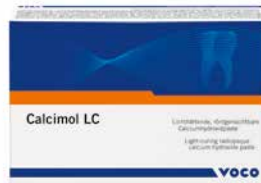
- Ready-to-use calcium hydroxide paste
- Suitable for use under any lining or restorative material
- Immediately ready for use
- With high pH value (12.5) known for bacteriostatic effect



REF 1096 Syringe 3 × 2.5 g, accessories

## Calcimol LC

- Light-curing radiopaque calcium hydroxide paste
- Effective protection of the pulp
- Ready-to-use one-component material
- Time-saving light-curing and direct application from the non-dripping NDT®-syringe



REF 1307 Syringe 2 × 2.5 g, accessories

REF 1047 Tube 2 × 5 g, accessories

# Strong temporaries

Masticatory function, phonetics and aesthetics have to be right, even with a temporary restoration. With Structur, our temporary self-curing composite for the fabrication of high-quality provisional crowns and bridges, even durable long-term temporaries can be fabricated in just a few steps. The material is based on the known nano-hybrid technology from VOCO.

## Structur 2

- Simple and fast working steps
- Less than 1 minute setting time in the mouth
- Easy to shape and polish



REF 1492	Cartridge 5 × 75 g A2, mixing tips type 6
REF 1491	Cartridge 5 × 75 g A3, mixing tips type 6

Cartridge 75 g, accessories<sup>1</sup>

## Structur 3

- Processing
  - quick, simple and reliable thanks to the 1:1 cartridge system
  - short setting time
  - elastic phase allows simple removal from the prepared tooth
  - gloss without polishing – only requires removal of the inhibition layer
- Durability
  - high compressive strength
  - excellent fracture resistance



REF 2512	Cartridge 5 × 50 ml A2, mixing tips type 6
REF 2513	Cartridge 5 × 50 ml A3, mixing tips type 6

Cartridge 50 ml, accessories<sup>1</sup>

<sup>1</sup>Further trading forms and single shades can be found under [www.voco.dental](http://www.voco.dental)



Following removal during elastic phase: extraoral setting

Source: Prof. Dr. Jürgen Manhart, Munich / Germany



Finished temporary bridge



Structur 3 bridge in situ

## Clip, Clip F and Clip F fluorescent

- Handling: easy to remove without damaging preparation boundaries, excellent modelling properties
- Efficient: easy, economical syringe application
- Immediately loadable: polymerisation by light-curing
- Clip F fluoresces under UV-A light: makes it easier to detect and remove the smallest material residues

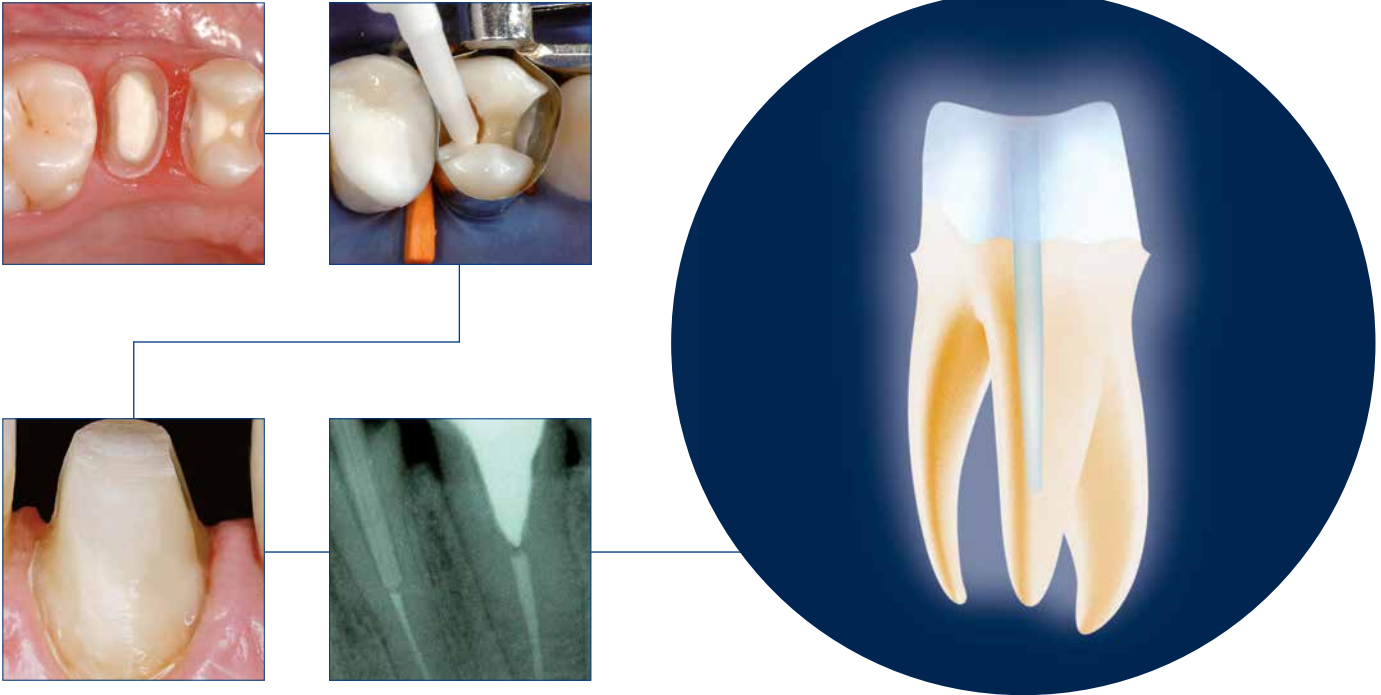


REF 1285	Clip, syringe 3 × 4 g
----------	-----------------------

REF 1287	Clip, Caps 25 × 0.2 g
----------	-----------------------

REF 1283	Clip F, syringe 3 × 4 g
----------	-------------------------

REF 1288	Clip F fluorescent, syringe 2 × 4 g, fluorescent
----------	--



## Core build-up made easy

If the natural tooth still has sufficient substance, preservation should usually be the goal. With our core build-up classic **Rebilda DC** and the matching composite root posts **Rebilda Post**, we offer a core build-up system that behaves like the natural tooth, even under load.

### Rebilda® Post

- Glass fibre-reinforced composite post
- Dentine-like elasticity behaviour, high transverse strength
- High level of radiopacity (350 %Al)
- Anatomical shape



REF 1782 Set II 5 posts each of (ø 1.0 mm, ø 1.2 mm, ø 1.5 mm, ø 2.0 mm), 1 drill each of (ø 1.0 mm, ø 1.2 mm, ø 1.5 mm, ø 2.0 mm), Ceramic Bond bottle 5 ml, Futurabond U *SingleDose* 20 pcs., Rebilda DC QuickMix syringe 10 g dentine, accessories

### Rebilda® DC

- Dual-curing flowable core build-up and post luting system
- Light-curing for time-saving application
- Additional chemical curing for reliable processing
- Available in 10 g QuickMix syringes and 50 g cartridge



REF 1396 Cartridge 50 g dentine, accessories

REF 1397 Cartridge 50 g blue, accessories

REF 1398 Cartridge 50 g white, accessories

REF 1403 QuickMix syringe 10 g dentin, accessories

REF 1404 QuickMix syringe 10 g blau, accessories

REF 1405 QuickMix syringe 10 g weiß, accessories

REF 1399 Cartridge 50 g fluorescent dentine, accessories

REF 1406 QuickMix syringe 10 g fluorescent dentine, accessories

### Rebilda DC fluorescent with activatable fluorescent

- Great visibility of build-up margins and excess material (also at deep subgingival levels) under UV-A light
- dentine-coloured under natural light



# THE global success product

Profluorid Varnish is indispensable for tooth desensitisation. The varnish is easy to apply and dries within seconds. It not only feels good, but also tastes good – because with seven attractive flavours there is definitely one for every patient. Also available in tubes and cartridges.

## VOCO Profluorid® Varnish

- Fast desensitisation and fluoride release (5 % NaF  $\triangleq$  22,600 ppm fluoride)
- Easy to apply – moisture tolerant
- Available in seven pleasant flavours



	SingleDose	Tube
<b>Flavour</b>	<b>200 x 0,40 ml</b>	<b>10 ml</b>
Melon	REF 1271	REF 1267
Caramel	REF 2229	REF 2232
Cherry	REF 2230	REF 2233
Mint	REF 2231	REF 2234
Bubble Gum	REF 2239	-
Cola Lime	REF 2241	REF 2236
Pina Colada	REF 2243	REF 2237
<b>Flavour</b>	<b>4 x 10 ml Tube</b>	
Mixed	REF 2971	

Further trading forms and single shades can be found under [www.voco.dentale](http://www.voco.dentale)



# The golden standard of fluoridation

Bifluorid 10 is the daily helper when it comes to treating hypersensitivities. The varnish is versatile and easy to apply – also ideal for orthodontic therapies and bleaching treatments.

## Bifluorid 10®

- Fluoride varnish for the treatment of dental hypersensitivity
- Immediately desensitising
- Formation of a protective coat against thermal and mechanical influences
- Special varnish base reinforces long-term effect and deep fluoridation



REF 1616 Bottle 10 g

REF 1617 Bottle 3 × 10 g, Solvent bottle 10 ml, Pele Tim No. 1

REF 1618 SingleDose 50 pcs., accessories

REF 1619 SingleDose 200 pcs., accessories



# Strong fillings without bonding

## Ionolux®

- Light-curing glass ionomer restorative material
- Excellent working time – setting time individually adjustable by light-curing
- No need for conditioning of dental hard tissue
- Does not stick to the instrument, easy to model



REF 2115 Set application capsule 50 pcs. (10 × A1, 10 × A2, 30 × A3)

REF 2122 Application capsule 150 pcs. A2  
REF 2123 Application capsule 150 pcs. A3

# Colourful for children – proven for years

## Twinky Star®

- Coloured light-curing compomer restorative material with glitter effect
- Eight attractive colours with glitter effect
- Easy and quick application from Caps
- Outstanding polishability



REF 1680 Set Caps 40 × 0.25 g (5 of each shade), shade guide



# Daily helper for your practice

## Fissurit® F

- Light-curing fissure sealant with fluoride, white
- Quick and direct application from the non-dripping NDT®-syringe
- White for application control
- Excellent flow properties and low viscosity



REF 1292 Spritze 2 x 2 g, Zubehör

REF 1293 Set Spritze 5 x 2 g, Zubehör

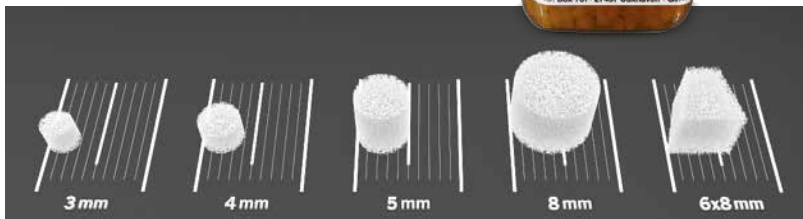
## Pele Tim

- Foam pellets for application of liquid or paste preparations without pressure
- 5 practical sizes
- Painfree application without pressure
- Economical application



REF 2250 Gr. 0 3.000 x ø 3 mm

REF 2250 Gr. 0 3.000 x ø 3 mm



REF 2253 Gr. 2 1.000 x ø 5 mm  
 REF 2254 Gr. 3 500 x ø 8 mm  
 REF 2255 Gr. 4 500 x 6 x 8 mm

# Perfect Bleach – naturally white



Effective, gentle and long-lasting: With our home bleaching system Perfect Bleach you can offer your patients convenient and contemporary tooth whitening that meets the highest aesthetic demands – and this at an attractive price-performance ratio.

## Perfect Bleach®

- Simple user-friendly application
- Gentle on tooth substance and existing restorations
- Significant whitening effect already after a short time



REF 1664 Set syringe 6 x 2.4 ml with 16 % carbamide peroxide, Block Out Gel LC syringe 1.2 ml, material for 2 trays, storage box, cosmetic bag, shade guide, accessories

REF 1662 Syringe 3 x 2.4 ml with 10 % carbamide peroxide

REF 1665 Syringe 3 x 2.4 ml with 16 % carbamide peroxide

REF 1019 Perfect Protect, syringe 2x2 ml

The PERFECT match



# Lasts – without etching and bonding!

For a secure adhesion to tooth and restoration: With Bifix SE, the dual-curing, self-adhesive luting system, indirect restorations and root posts can be luted fast and reliably. The composite-based material is suitable for ceramics, zirconium dioxide, composite as well as metal. Bonding agents or conditioner are not needed as all necessary components are already included.

## Bifix® SE

- Fast working: no etching, no bonding
- Odourless
- Easy handling



REF 1784 Set QuickMix syringe 3 x 5 g (universal, transparent, white-opaque), accessories

QuickMix syringe 5 g, accessories<sup>1</sup>

<sup>1</sup>Further trading forms and single shades can be found under [www.voco.dental](http://www.voco.dental)

# Denture relining – know how!

Perfectly relined – in one session only. Ufi Gel hard C and Ufi Gel SC are the ideal dream team for the daily prosthetic work. The system offers each application case a special relining solution and can be applied easily and time-saving chairside. Should further adjustments be necessary later, these additions can be made over the years.

## Ufi Gel® hard C

- Hard direct denture relining
- Complete, hard relining chairside, in just one session
- Methyl methacrylate-free
- Neutral taste and odour



REF 2215 Set cartridge 80 g, adhesive bottle 10 ml, accessories

## Ufi Gel® SC

- Permanently soft, cold-curing relining material on silicone base
- Top quality relining silicone
- Complete relining in one single session (chairside)
- Remains permanently soft



REF 2041 Set cartridge 50 ml, adhesive bottle 10 ml, glazing base 10 ml, glazing catalyst 10 ml, accessories



# CLEAN and enJOY

With CleanJoy tooth cleaning becomes a complete pleasure!  
The paste gently removes plaque and discolouration and tastes delicious in the flavours mint, cherry and caramel. Xylitol and fluoride (700 ppm) also contribute to the remineralisation of teeth and strengthening of the natural tooth structure.

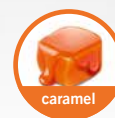
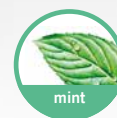
## CleanJoy®

- Stable, homogenous consistency, no splashing (2,000 - 3,000 r / min)
- No parabens
- Available in three abrasion grades, thus can be individually adjusted to each situation



Flavour	Coarse (red) Tube 100 g	Medium (yellow) Tube 100 g	Fine (green) Tube 100 g
Mint	REF 2092	REF 2091	REF 2090
Caramel	REF 6092	REF 6091	REF 6090
Cherry	REF 6100	REF 6099	REF 6098

**Tube 4 × 100 g fine (green)**  
Mint  
REF 2089



## Your order

Offers are only valid at participating retail partners. Special prices offered by your depot are always taken into consideration.

Errors and omissions excepted. No liability for printing errors.

### VOCO customer service

Freecall: 00 800 44 444 555

E-Mail: [service@voco.de](mailto:service@voco.de)

This brochure was handed out by:

VC 84\_009900 EN 02/25

