



## ORAL CARE PROGRAMME



## WELCOME TO THE DENTALISTS!

Dear dentists,  
dear dental assistants,

Your product requirements are a genuine key priority to us as a research-based dental company. Tailored to your individual requirements, reliable, practical and of top quality – that, and no less, is what you can expect from our brand products, and this applies in particular to our oral care range.

We offer you

- **powerful prophylaxis products,**
- **effective desensitising agents,**
- **protective fissure sealants,**
- **gentle whitening products**
- **and matching accessories.**

High-quality materials which streamline your daily work at the practice with simple yet sophisticated extras: The traffic light system of our prophylaxis paste CleanJoy, for example, helps you easily distinguish the different abrasion grades from each other and carry out polishing in consecutive and ideally coordinated steps, if required. The fluoride varnish Profluorid Varnish is available in many tasty flavours and a number of different product presentations. Practical handling and effective working – guaranteed by each and every one of the VOCO oral care products!

Do you have questions or require further information? Your personal VOCO dental consultant will be pleased to answer your telephone call. And, of course, our customer service is also always happy to assist you (by e-mail: [service@voco.de](mailto:service@voco.de) or by Freecall 00 800 44 444 555).

Product information, instructions for use, scientific information, clinical cases and more are available for you on **[www.voco.dental](http://www.voco.dental)**.

News, information and other VOCO fans can be found on Facebook, Instagram and Youtube!

Your VOCO GmbH



## PROPHYLAXIS

Bifluorid 10 ..... 4  
Remin Pro ..... 6

## DESENSITISER

Admira Protect ..... 7  
VOCO Profluorid Varnish ..... 8

## FISSURE SEALING

Fissurit FX ..... 10  
Fissurit F ..... 10  
Grandio Seal ..... 12

## PROFESSIONAL CLEANING

CleanJoy ..... 13

## WHITENING

Perfect Bleach ..... 14  
Perfect Bleach Office+ ..... 15

## VARIOUS PRODUCTS

Prophylaxis Set ..... 16  
Disposable articles ..... 16

## ORAL CARE

Overview ..... 17

## NOTES ..... 18

## ICONS

As usual, the oral care catalogue provides you with comprehensive information on each individual product and offers you a quick and practical overview of the entire oral care product range. You can find the fundamental product characteristics at a glance: our icons visualise the core properties of the respective product.



### Material composition

This product is based on nano-hybrid technology.



### Filler content

This product has a defined filler content, which is indicated in percent by weight.



### Application of the material

This material is available in the non-running, non-dripping NDT®-syringe.



### Application of the material

This material is automatically mixed in the correct ratio before application.



### Fluoride content

This product contains the level of fluorides indicated. For detailed information, please consult the instructions for use.



### Curing of the material

This product cures through exposure to light. The time indicated represents the average time. For detailed information, please consult the instructions for use.



### Material composition

This product contains the ingredient shown.

## Bifluorid 10®

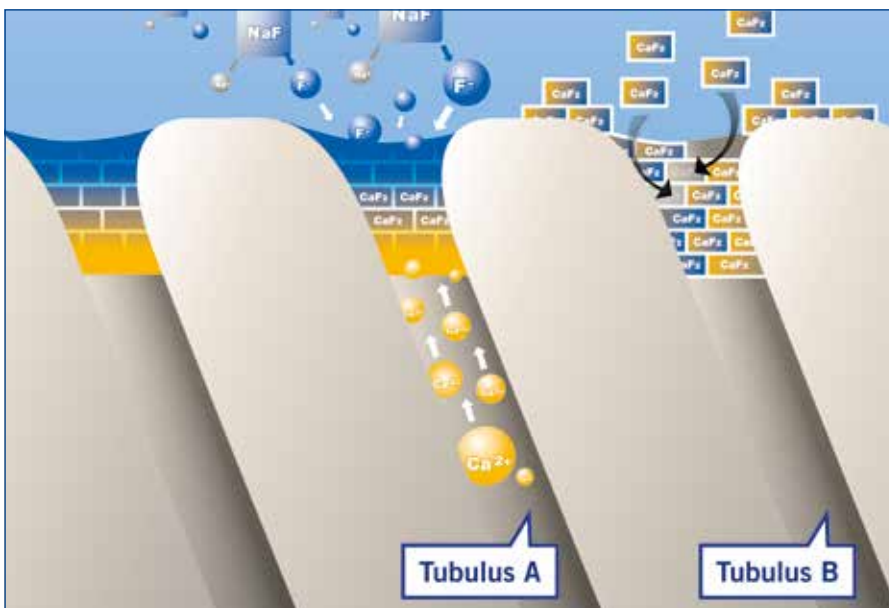
For the treatment of hypersensitivity and for fluoridation

You can encounter many causes of your patients' dentine hypersensitivities during your daily work. Bifluorid 10 is the ideal preparation to effectively alleviate these complaints. Bifluorid 10 is ideally suited for accelerated remineralisation and fluoridation of tooth substance. Bifluorid 10 also prevents secondary caries after restoration, especially after employment of the etching technique.

Bifluorid 10 features a varnish base made from natural materials and the unique combination of 5 % sodium fluoride (equal to 22,600 ppm fluoride) and 5 % calcium fluoride. The special combination of the two fluoride salts permits both an immediate high release of fluoride (through NaF) and long-term fluoridation (through  $\text{CaF}_2$ ).

The easily soluble sodium fluoride provides the quick release of fluoride ions, that are converted to calcium fluoride on the tooth surface to effectively support remineralisation. The less soluble calcium fluoride, which also makes up 5 % of Bifluorid 10, acts to ensure that the fluoride remains on the surface of the teeth for an extended period of time and the dentinal tubules are effectively sealed. This, in turn, guarantees long-term fluoridation. The coactions of the two fluorides through the formation of calcium fluoride depots facilitate long-term conversion of hydroxyapatite into fluorapatite. Damaged enamel surfaces are thus effectively protected.

### Mode of action of the sodium and calcium fluoride contained in Bifluorid 10®



Tubulus A:

Formation of calcium fluoride by the reaction of the sodium fluoride contained in Bifluorid 10 with calcium ions contained in the saliva and dentinal tubuli liquid

Tubulus B:

Storage of the calcium fluoride contained in Bifluorid 10 in the tooth substance and tubuli

# Bifluorid 10®

For the treatment of hypersensitivity and for fluoridation



## Indications

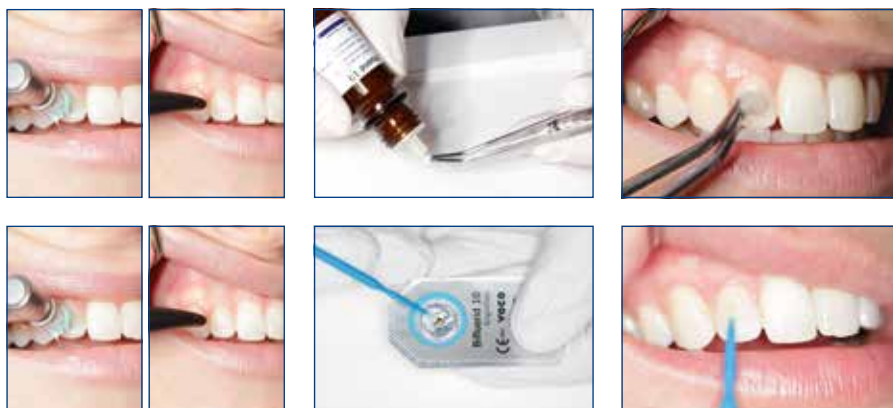
Treatment of hypersensitivity, including

- cervical area and crown margins
- sensitivity after professional cleaning and calculus removal
- tooth surfaces after preparation and / or grinding
- worn occlusal surfaces and teeth carrying clasps
- after injury of the enamel (e.g. fractures, chips)
- sealing cavity margins after restoration, especially after the etching technique has been employed
- as a dentine protection / lining under amalgam fillings

## Advantages

- Immediately desensitising
- Formation of a protective coat against thermal and mechanical influences
- Transparent – no discolouration of teeth
- Special varnish base reinforces long-term effect and deep fluoridation
- Economical and simple – high yield, low cost, fast application
- Dries quickly
- Colophony-free
- Contains 5 % sodium fluoride (equal to 22,600 ppm fluoride) and 5 % calcium fluoride
- Bleaching compatible, reduction of sensitivity, without hindering the bleaching treatment

## Application



REF 1615	Bottle 4 g, Solvent bottle 10 ml
REF 1616	Bottle 10 g
REF 1617	Bottle 3 x 10 g, Solvent bottle 10 ml, Pele Tim No. 1
REF 1618	<i>SingleDose</i> 50 pcs., accessories
REF 1619	<i>SingleDose</i> 200 pcs., accessories
REF 1032	Solvent bottle 10 ml
REF 2247	Single Tim, application brushes, 100 pcs.
REF 2252	Pele Tim, No. 1, 3.000 x ø 4 mm

# Remin Pro®

Protective dental care with fluoride and hydroxy apatite



Remin Pro products combine three components for effective protection against demineralisation and erosion: hydroxy apatite, fluoride and xylitol. Thus they represent an optimal addition to the services offered by your surgery! But also at home our Remin Pro products are ideal to continue maintaining your dental health.

## Indications

- After tooth whitening
- After professional tooth cleaning
- For the prevention and control of hypersensitivities
- During orthodontic treatment

## Advantages

- Contains fluoride (1,450 ppm), hydroxy apatite and xylitol
- Provides a balanced oral flora and thus protects the teeth against harmful acid attacks
- Strengthens the teeth after whitening and professional cleaning
- Available in three aromatic flavours (melon, mint and strawberry)
- Can be used daily and especially well-suited for use at home
- Optimal for cases of MIH

REF 2003	Tube 12 × 40 g melon
REF 2004	Tube 12 × 40 g mint
REF 2005	Tube 12 × 40 g strawberry
REF 2006	Tube 12 × 40 g mixed
REF 2007	Tube 3 × 40 g mixed
<i>Not available in Canada</i>	

## Application



Remin Pro is the ideal product to continue the maintenance of dental health at home. The patient can very easily apply the cream with a toothbrush after evening oral hygiene, with a finger or an individual splint.

# Admira® Protect

Light-curing ORMOCER® based protective desensitiser



Admira Protect is an innovative, light-curing ORMOCER® based protective varnish. ORMOCER® stands for “Organically Modified Ceramics”. One of the greatest advantages of ORMOCER® based materials is their outstanding biocompatibility.

Most hypersensitivities, particularly in the cervical dentine region, can be permanently reduced with just one treatment using Admira Protect. The use of Admira Protect is recommended on exposed crown margins, after tooth cleaning and following the removal of tartar.

The colourless varnish seals the dentinal tubules both permanently and reliably. The transmission of pain as a result of movement of the dentinal fluid is thus significantly reduced. In contrast to fluoride varnishes, with Admira Protect, tooth necks are permanently sealed with light-curing material thanks to the formation of a protective layer.

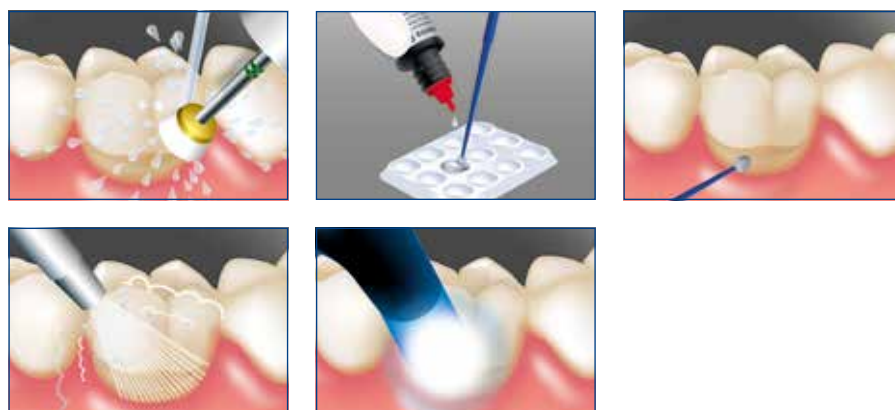
## Indications

- Treatment of hypersensitive dentine
- Treatment of cervical areas and crown margins
- Treatment of cervical areas after professional cleaning and calculus removal

## Advantages

- Biocompatible
- Permanent elimination of hypersensitivity
- Reliable adhesion
- Special filler technology for high abrasion resistance
- Fluoride release

## Application



REF 1650	Bottle 4.5 ml, accessories
REF 2247	Single Tim, application brushes, 100 pcs.

Prophylaxis

Desensitiser

Fissure sealing

Professional cleaning

Whitening

Various products

# VOCO Profluorid® Varnish

Fluoride-containing dental desensitising varnish (5 % NaF)

Prophylaxis

Desensitiser

Fissure sealing

Professional cleaning

Whitening

Various products



## Hypersensitivity

Sensitive teeth are a problem for a large number of people. Usually, the condition causes only transient pain which patients do not always report to their dentists.

Hypersensitivity is mainly caused by exposed dentinal tubules. Therefore, the aim of treatment is to seal these tubules for the long-term.

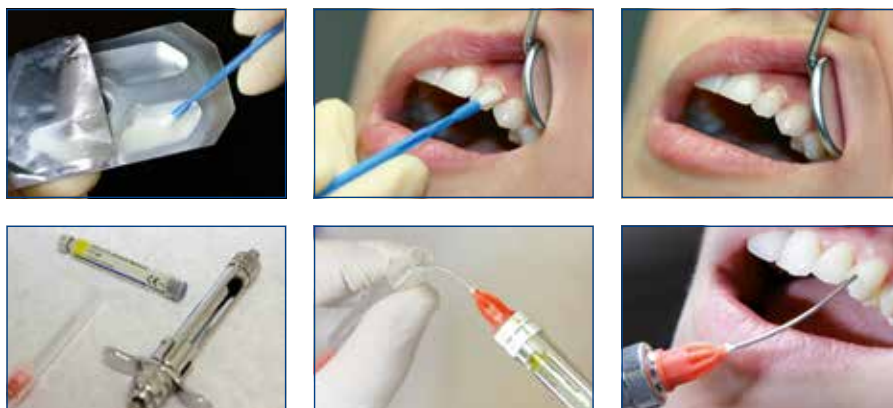
## Components and effect of VOCO Profluorid® Varnish

VOCO Profluorid Varnish is a colophony-based varnish containing 5 % sodium fluoride (22,600 ppm fluoride). The fluoride ion, together with the calcium ions accumulated in the tubules, causes a precipitation of calcium fluoride, which effectively seals the tubules. According to a user survey, over 85 % of patients were completely free of pain after only one treatment with VOCO Profluorid Varnish.

As well as rapidly sealing the dentinal tubules, VOCO Profluorid Varnish also causes calcium fluoride deposits to form on the tooth surface. These deposits protect the tooth from acid attacks, promote remineralisation and contribute to the long-term formation of fluoroapatite.

Xylitol, which is said to have a cariostatic effect in addition to its taste-enhancing properties, is also added to the varnish.

## Application







**Indications**

Treatment of hypersensitive teeth  
 Treatment of sensitive root surfaces

**Advantages**

- Moisture tolerant
- Esthetic, tooth-shaded varnish
- Fast desensitisation and fluoride release (5 % NaF  $\triangleq$  22,600 ppm fluoride)
- In seven pleasant flavours available: melon, mint, cherry, caramel, bubble gum, cola lime and pina colada
- Ideal for treating cervical areas after professional cleaning and calculus removal
- Optimal for cases of MIH

**Advantages of the SingleDose**

- Easy, quick and hygienic
- No additional devices required
- No spilling in any position



**Advantages of the cartridge**

- Multiple use with disposable cannulae
- Perfectly precise application
- Extremely easy application in proximal areas
- Complete fluoride application in only a single step



Tube	10 ml	50 ml
<b>Flavour</b>		
Melon	REF 1267	REF 1272
Caramel	REF 2232	–
Cherry	REF 2233	–
Mint	REF 2234	–
Cola Lime	REF 2236	–
Pina Colada	REF 2237	–
<b>Flavour</b>	<b>4 x 10 ml</b>	
Mixed	REF 2971	
<i>SingleDose</i>		
<b>Flavour</b>	<b>50 x 0.40 ml</b>	<b>200 x 0.40 ml</b>
Melon	REF 1269	REF 1271
Caramel	REF 2226	REF 2229
Cherry	REF 2227	REF 2230
Mint	REF 2228	REF 2231
Bubble Gum	REF 2238	REF 2239
Cola Lime	REF 2240	REF 2241
Pina Colada	REF 2242	REF 2243
<b>Flavour</b>	<b>48 x 0.40 ml</b>	<b>50 x 0.25 ml</b>
Melon	–	REF 1268
Mixed	REF 2225	–
<i>Zylinderampulle</i>		
<b>Flavour</b>	<b>5 x 1.70 ml</b>	
Melon	REF 2235	
REF 2167	Application cannulae type 43, 100 pcs.	
<i>REF 1272 and 2235 are not available in Canada</i>		

Prophylaxis

Desensitiser

Fissure sealing

Professional cleaning

Whitening

Various products

## Fissurit® F · Fissurit® FX

The tried and tested fissure sealant system

### Fissurit® F

Fissurit F is a white-coloured material for sealing fissures, available both as a liquid in bottles and in the VOCO NDT® syringe. NDT® stands for Non-Dripping Technology. The NDT® syringe delivers highly flowable materials such as Fissurit F without running or dripping, thereby considerably simplifying treatment of the patient's fissures. Syringes that run, loss of material and "overfilled fissures" are problems of the past thanks to the non-dripping Fissurit F syringe.

In addition, Fissurit F contains fluoride to inhibit the development of caries. The material is coloured white to enable you to maintain a close visual check of marginal integrity.

### Fissurit® FX

Fissurit FX is a highly filled fissure sealant which provides a long-lasting seal even where extensive fissure sealing has been carried out.

At 55 % w/w, Fissurit FX is the most highly filled fissure sealant in its class after Grandio Seal.

Fissurit FX, too, contains fluoride to inhibit the development of caries and is coloured white to enable you to maintain a close visual check of the edges of the fissures.

### Clinical Case



#### The success of Fissurit® is based on various factors

- Fissurit F and Fissurit FX are light-curing, single-component materials and therefore save you time and material
- The low viscosity of the Fissurit products ensures that the material flows deep into the fissure, filling and sealing it to ensure marginal integrity
- All Fissurit sealants are extremely abrasion-resistant thanks to the balanced polymer matrix
- Using the extra fine cannulae supplied with all Fissurit F and Fissurit FX systems, the fissure sealant can be applied quickly, simply and hygienically directly into the previously conditioned fissure

## Fissurit® FX

Highly filled light-curing fissure sealant with fluoride, white



### Indications

Sealing of fissures and occlusal surfaces for caries prophylaxis

Sealing of extended fissures

Filling of small cavities

### Advantages

- Filler content of 55 % w/w for outstanding abrasion proofness
- Quick and easy application from the direct-application syringe with bendable metal cannulae
- Optimal flow properties
- High stability and good adhesion to enamel
- Perfect marginal adaptation
- Continuous fluoride release
- White for easy visual control



REF 1181 Syringe 2 x 2.5 g, accessories  
REF 2145 Application cannulae type 40, 100 pcs.

*Not available in Canada*

## Fissurit® F

Light-curing fissure sealant with fluoride, white



### Indications

Sealing of pits, fissures and occlusal surfaces for caries prophylaxis

Facing of damaged enamel surfaces

Anchoring of orthodontic appliances

Sealing of composite and cement fillings (protection against moisture)

Restoration of small carious lesions

Repair of small defects in composite and amalgam fillings

### Advantages

- Quick and direct application from the non-dripping NDT®-syringe
- White for application control
- Excellent flow properties and low viscosity
- High stability and good adhesion to enamel
- Perfect marginal adaptation
- Continuous fluoride release



REF 1180 Bottle 2 x 3 ml  
REF 1292 Syringe 2 x 2 g, accessories  
REF 1293 Set syringe 5 x 2 g, Vococid gel syringe 5 ml, Vococid bottle 2 x 3 ml, accessories  
REF 2145 Application cannulae type 40, 100 pcs.

# Grandio® Seal

Light-curing nano-hybrid fissure sealant



Grandio Seal is the very first nano fissure sealant to make no compromises whatsoever. It is an extremely flowable, light-curing fissure sealant material with a filler content in excess of 70 % w/w. This makes Grandio Seal the most abrasion-resistant fissure sealant. Its viscosity guarantees, amongst other things, that the material penetrates deep fissures without forming bubbles. This unique combination is made possible thanks to the use of nano-particles: outstanding flowability, minimal abrasion and, at the same time, physical values which are better than those for various hybrid composites for the posterior region.

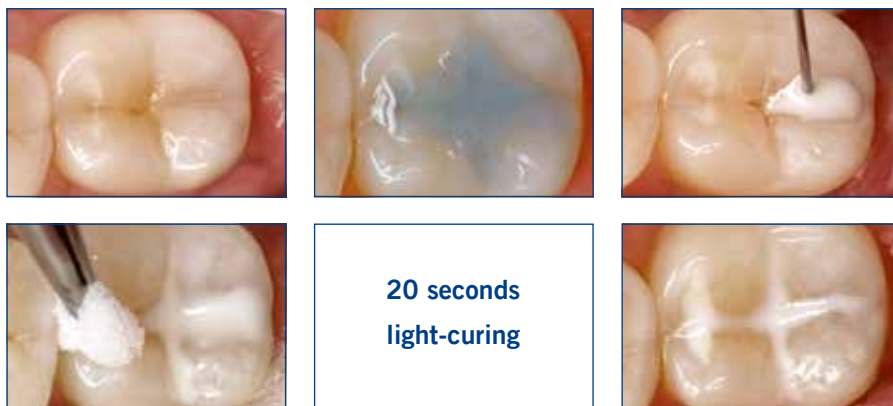
## Indications

- Sealing / filling of pits and fissures
- Sealing / facing of damaged enamel surfaces
- Covering of caries predilection sites during orthodontic treatments
- Sealing of deciduous teeth

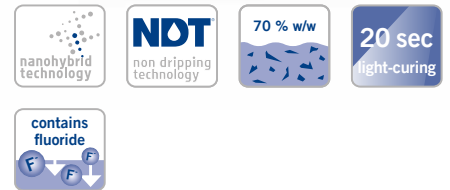
## Advantages

- Use of nano-fillers for optimal flow behaviour
- With 70 % w/w highest filler content in its class
- Outstanding physical properties
  - low abrasion
  - high transverse strength
  - extremely low shrinkage values
- Excellent handling
- Optimal wetting
- Perfect marginal adaptation
- Ideal for sealing composite or glass ionomer fillings (protective layer against humidity)

## Clinical Case



Source: Dr. Marcelo Balsamo, São Paulo / Brazil



REF 1060	Set syringe 5 × 2 g, Vococid gel syringe 5 ml, accessories
REF 1061	Syringe 2 × 2 g, accessories
REF 2147	Application cannulae type 45, 100 pcs.

**Grandio® Seal in the NDT®-syringe**

- NDT® means non-dripping-technology
- Especially suited for fine-flowing materials
- Can be dosed and applied with precision
- Without any loss of material

Prophylaxis

Desensitiser

Fissure sealing

Professional cleaning

Whitening

Various products

# CleanJoy®

## Fluoride-containing tooth cleaning and polishing paste in three cleaning grades



In addition to thorough sound oral hygiene at home, the basis for the prophylaxis of caries, periodontitis and periimplantitis, is regular professional tooth cleaning (PTC) tailored to individual requirements. This creates noticeably smooth surfaces which inhibit renewed attachment of plaque-forming bacteria and the formation of staining. These are perfect preconditions for long-lasting oral health. The CleanJoy system enables you to thoroughly yet gently remove hard as well as soft plaque and staining from dental hard tissue, fillings, implants and prosthetic restorations. The “fine” paste is barely abrasive and therefore also suitable for polishing after using a powder jet device.

### Indications

Removal of soft and hard surface plaque

Removal of extrinsic discoloration (e.g. staining from coffee, tea or tobacco)

Polishing of tooth surfaces as part of professional tooth cleaning, prior to whitening or following the removal of orthodontic devices

Cleaning and polishing of restorations as part of professional tooth cleaning

Removal of residues of temporary luting material prior to definitive bonding (cementation)

### Advantages

- Stable, homogenous consistency
- No splashing (2,000 - 3,000 r / min)
- No parabens
- Available in three abrasion grades, thus can be individually adjusted to each situation
- RDA values (measured in accordance with DIN EN ISO 11609)
  - coarse (red) RDA = 195
  - medium (yellow) RDA = 127
  - fine (green) RDA = 16
- Traffic light coding: simple to use without confusion
- Can be used with any conventional instrument (small brush, cup etc.)
- Contains fluoride (700 ppm) and xylitol
- Three pleasant flavours: mint, caramel, cherry

### Application



Slight extrinsic staining in the anterior region of the mandible



Use of the yellow cleaning paste and finishing with the green polishing paste



Clean and smooth tooth surfaces

Source: Dr. Sanzio Marques, Passos / Brazil

Coarse (red)	
Flavour	Tube 100 g
Mint	REF 2092
Caramel	REF 6092
Cherry	REF 6100
Medium (yellow)	
Flavour	Tube 100 g
Mint	REF 2091
Caramel	REF 6091
Cherry	REF 6099
Fine (green)	
Flavour	Tube 100 g
Mint	REF 2090
Caramel	REF 6090
Cherry	REF 6098
REF 2089	Tube 4 × 100 g fine (green), mint

## Perfect Bleach®

Whitening gel for discoloured teeth (10 % / 16 % carbamide peroxide)



3.5 %  
H<sub>2</sub>O<sub>2</sub>

6 %  
H<sub>2</sub>O<sub>2</sub>

### Perfect Bleach® 10 %

- REF 1658 Mini set syringe 4 × 2.4 ml with 10 % carbamide peroxide, storage box, cosmetic bag
- REF 1660 Set syringe 6 × 2.4 ml with 10 % carbamide peroxide, Block Out Gel LC syringe 1.2 ml, material for 2 trays, storage box, cosmetic bag, shade guide, accessories
- REF 1662 Syringe 3 × 2.4 ml with 10 % carbamide peroxide

### Perfect Bleach® 16 %

- REF 1659 Mini set syringe 4 × 2.4 ml with 16 % carbamide peroxide, storage box, cosmetic bag
- REF 1664 Set syringe 6 × 2.4 ml with 16 % carbamide peroxide, Block Out Gel LC syringe 1.2 ml, material for 2 trays, storage box, cosmetic bag, shade guide, accessories
- REF 1665 Syringe 3 × 2.4 ml with 16 % carbamide peroxide

*Not available in Canada*

Perfect Bleach is a carbamide peroxide-based whitening material. Depending on individual preferences, you can offer treatment with carbamide peroxide gel with a concentration of either 10 % or 16 % (corresponds to 3.5 % or 6 % H<sub>2</sub>O<sub>2</sub>). This gentle yet effective whitening material can be used both in the practice and, following instruction and initial treatment from a dentist, at home.

The sodium fluoride and potassium contained in the 16 % Perfect Bleach ensure that hypersensitivity is prevented during and after the treatment.

### Indications

Gentle and permanent tooth whitening for vital and non-vital teeth e.g. in cases of staining due to medication, fluorosis, food, trauma, ageing etc.

### Advantages

- Simple user-friendly application
- Gentle on tooth substance and existing restorations
- Significant whitening effect already after a short time
- Pleasant menthol flavour
- Set in attractive cosmetic bag

### Mini set

An attractive cosmetic bag contains four syringes of whitening gel, the storage box and the graphically-assisted instructions for use.

### Especially suitable for

- Dental practitioners who contract an external laboratory to fabricate the tray
- Patients who already own a whitening tray

### Set

The set contains six syringes of whitening gel, the storage box, one syringe of Block Out Gel LC, the material for two trays and the grafically assisted instructions for use.

### Especially suitable for

- Dental practitioners who fabricate the whitening gel tray in their own surgery

# Perfect Bleach® Office+

Whitening gel for discoloured teeth



35 %  
H<sub>2</sub>O<sub>2</sub>

auto  
mix

## Satisfied patients, satisfied practitioners

Perfect Bleach Office+ is a particularly effective gel which achieves lastingly successful whitening quickly and safely. The product is pH neutral and contains sodium fluoride. During and after the whitening procedure, these two features result in distinctly reduced sensitivity in patients who are very susceptible to pain. The reaction time of Perfect Bleach Office+ is only 10 to 15 minutes. The gel does not require further activation once it is applied to the teeth. Forgoing the use of a light particularly has the advantage that neither the teeth being treated nor the bordering gingiva are liable to heat damage.

## Indications

Perfect Bleach Office+ is suited for whitening individual or multiple discoloured, vital or devitalised teeth. The whitening success depends on the natural tooth shade as well as the intensity and cause of the discolouration. It is possible to whiten discolourations of organic origin, which generally have the following causes:

- discolouration as a result of traumata
- discolouration caused by medication (e.g. tetracycline)

Discolourations of inorganic origin, such as components of amalgam (silver), are not whitened, nor are restorations

## Advantages

- 35 % hydrogen peroxide concentration for safe and fast whitening of discolourations
- Good contrast to the tooth and LC Dam due to red coloured material
- Can be used for both internal and external whitening
- Perfect Bleach Office+ in the convenient QuickMix syringe
  - only the amount of gel needed is activated
  - no mixing errors and the gel is always fresh
- Composite-based gingiva protection (LC Dam)
- No painful heat-loading from light-curing the gingiva protection

REF 1672	Set QuickMix syringe 2 × 4 ml, LC Dam syringe 2 × 2 g, accessories
REF 1673	QuickMix syringe 4 ml, accessories
REF 1655	LC Dam syringe 2 g, accessories
REF 2194	Mixing tips type 14, 50 pcs.
REF 2195	Mixing tips type 15 (with intraoral tips type 1), 50 pcs.
REF 2146	Application cannulae type 41, 100 pcs.

*Not available in Canada, Ireland and United Kingdom*

# Prophylaxis Set

All-in-one – Professional prophylaxis products from VOCO in only one single set



## Indications

More information on the indications can be found on the product pages of CleanJoy, Remin Pro, VOCO Profluorid Varnish and Grandio Seal



## Advantages

- Fluoridate, Protect, Care, Seal
- Also for individual prophylaxis
- Different flavours for testing
- For your daily and special practice







REF 2996 Set CleanJoy tube 2 × 100 g, Remin Pro tube 40 g, Profluorid Varnish *SingleDose* 12 × 0.4 ml, Grandio Seal syringe 2 × 2 g

*Product presentations may vary  
Not available in Canada*

### Mixing tips

REF 2194	Mixing tips type 14 for Perfect Bleach Office+, 50 pcs.		REF 2195	Mixing tips type 15 (with intraoral tips type 1) for Perfect Bleach Office+, 50 pcs.	
----------	---	---	----------	--	---


### Application cannulae

REF 2145	Application cannulae type 40 for Fissurit F / FX, 100 pcs.		REF 2144	Application cannulae type 44 for Block Out Gel LC, 100 pcs.	
REF 2146	Application cannulae type 41 for LC Dam, 100 pcs.		REF 2147	Application cannulae type 45 for Grandio Seal, 100 pcs.	
REF 2167	Application cannulae type 43 for VOCO Profluorid Varnish cartridge, 100 pcs.		REF 2132	Application cannulae type 48 for Vococid, 50 pcs.	

### Application aids

REF 2250	Pele Tim, foam pellets No. 0 3.000 × ø 3 mm		REF 2247	Single Tim, application brushes, 100 pcs.	
REF 2252	No. 1 3.000 × ø 4mm				
REF 2253	No. 2 1.000 × ø 5 mm				
REF 2254	No. 3 500 × ø 8 mm				
REF 2255	No. 4 500 × 6 × 8 mm				
REF 2309	Disposable brushes for dental brush holder, 100 pcs.		REF 2245	Easy Brush, application brushes, 50 pcs.	

### Intraoral tips

REF 2139	Intraoral tips type 1 for Perfect Bleach Office+, 50 pcs.				
----------	---	---	--	--	--



# Oral Care

Fluoridation · Desensitisation						
Page	fluoridation	desensitisation	fluoride content	presentation	flavour	
4	Bifluorid 10	•	22.600 ppm	SingleDose, bottle	clinical	
6	Remin Pro	•	1.450 ppm	tube	mint, melon, strawberry	
7	Admira Protect	•	•	bottle	clinical	
8	VOCO Profluorid Varnish	•	22.600 ppm	SingleDose, tube, cartridge	mint, melon, caramel, cherry, bubble gum, cola lime, pina colada	

Fissure sealing	
Page	% w/w
10	Fissurit FX 55 % w/w
10	Fissurit F n/s
12	Grandio Seal 70 % w/w

Cleaning					
Page	flavour	RDA values	fluoride content	presentation	special characteristics
13	CleanJoy mint, cherry, caramel	coarse (195), medium (127), fine (16)	700 ppm	tube	xylitol, "traffic light coding"

Whitening		
Page	carbamide peroxide	hydrogen peroxide
14	Perfect Bleach 10 % / 16 %	equiv. to 3.5 % / 6 %
15	Perfect Bleach Office+	35 %





VOCO GmbH  
Anton-Flettner-Straße 1-3  
27472 Cuxhaven  
Germany  
[www.voco.dental](http://www.voco.dental)

**Customer Service**

Freecall: 00 800 44 444 555  
Fax: +49 (0)4721-719-140  
[service@voco.de](mailto:service@voco.de)