

# Clip · Clip F · Clip Flow

LIGHT-CURING FILLING MATERIAL FOR  
TEMPORARY RESTORATIONS

# Clip · Clip F · Clip Flow

## SAVING TIME IN YOUR DENTAL CLINIC

Clip, Clip F and Clip Flow are the ideal composite materials for temporary fillings of all types. Their indications reach from application in inlay / onlay technique to repeated temporary obturations in endodontic treatment. Clip Flow can, in addition, be used for relining, as a block out material, for covering the gingival margin, for fixing resin matrices during filling placement, and for sealing root canal orifices.

### Saving time in your dental clinic

Clip is a temporary restorative that can be cured with a halogen /LED polymerisation light. Clip remains elastic and can be removed in one piece with a suitable instrument before permanent treatment of the cavity. Its excellent seal protects the cavity from food particles and bacteria. Clip is uncomplicated to use, conserves material and is economical. It is particularly simple to use in the inlay/onlay technique as no drilling is required and the fit of the final restoration is not compromised.

### Endodontic treatments

Clip products are also utilised in endodontics: in prolonged root treatment requiring more than one sitting Clip provides a saliva-proof seal for the cavity and thus protects it from germinal invasion. Here, too, the simple and time-saving handling of the material is advantageous during repeated sealing and re-opening in endodontic treatment.

### Clip F – Fluoride-releasing

Clip F additionally contains fluorides; hence Clip F combines the advantages of Clip and those of a continued release of fluorides inside the freshly prepared cavity.

### Clip F fluorescent

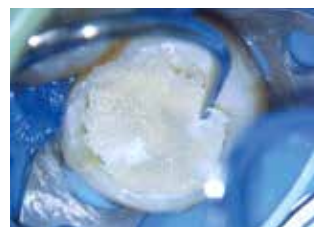
Clip F fluorescent impresses with its versatility and user-friendliness. The one-component material is easy to place and mould. Light-curing makes Clip F fluorescent immediately loadable and saliva-proof. The elastic material properties allow residue-free removal with clean and undamaged preparation margins in most cases. Under UV-A light, the detection and removal of small excesses and material residues is considerably easier: especially with thin layer thicknesses that are not easily visible to the naked eye. Clip F fluorescent is suitable for all types of temporary fillings, closures and restorations, including the onlay/inlay technique.



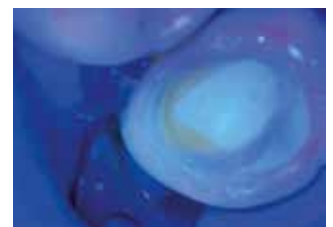
Application of Clip F fluorescent into the cavity



UV-A lamp edge seal check



Easy removal in one piece



Use a UV-A lamp to inspect the cavity for the smallest amount of material

Source: Dr. Ricardo Portigliatti, Argentina

# Clip Flow

## VERSATILE AND FLOWABLE

### Clip Flow as a relining material

Clip Flow is excellent for relining temporary crowns and bridges, guaranteeing perfect fit until the definite treatment is carried out.

### Clip Flow as a block out material

Before taking impressions, for example, Clip Flow is the ideal material for blocking out retentive areas in the dental arch. With Clip Flow taking impressions can be considerably simplified.



Application of Clip Flow



Polymerisation



Blocked out interdental spaces



Removal of Clip Flow

### Gingiva protection with Clip Flow

In order to protect the teeth during, for example, the application of in-office whitening products, Clip Flow can be used for gingiva protection. It acts as a barrier for the whitening product and protects the surrounding soft tissue and teeth which are not to be whitened. Covering the gingival margin with Clip Flow is quick and simple.



Application of gingiva protection



Removal in one piece

### Fixing of resin matrices with Clip Flow

Clip Flow allows the simple fixing of resin matrices to optimally hold them in place during placement of the filling.



Fixing the matrix



Restoring form and function of the tooth

Source: Dr. Walter Denner, Fulda / Germany

### Implant Abutments

The aperture for the connecting screw on the implant-abutment interface is frequently given a temporary seal before the definitive luting of the restoration onto the abutment. This prevents luting cement from entering the aperture and thus sealing it permanently. With Clip Flow, this can be prevented in a quick, comfortable and reversible manner.



Abutment with open aperture



Aperture sealed with Clip Flow



Light-curing of the material



Finished seal

Source: Dr. Walter Denner, Fulda / Germany

# Clip · Clip F · Clip Flow

## LIGHT-CURING FILLING MATERIAL FOR TEMPORARY RESTORATIONS

### Indications

All types of temporary fillings  
 Temporary protection in inlay / onlay technique

### Additional indications Clip Flow

Sealing of openings for implant screws  
 Relining material for temporary crowns and bridges  
 Block out material for retentive areas in the dental arch, e.g. before taking impressions  
 Covering of the gingival margin  
 Fixing of resin matrices during filling placement  
 Temporary filling of cavities and sealing of root canal orifices

### Advantages

- Easy to place – easy to remove in one piece
- Easy to remove without damaging preparation boundaries
- Excellent packability and sculpting properties
- Immediately load-bearing by light-curing
- Clip F fluoresces under UV-A light for easy detection and removal of even the smallest material residues
- Easy, economical application by syringe
- Flowable, application through NDT®-syringe (Clip Flow)

### Presentation

#### Clip

- REF 1284 Syringe 2 × 4 g
- REF 1285 Syringe 3 × 4 g
- REF 1287 Caps 25 × 0.2 g
- REF 9301 Dispenser – Caps

#### Clip F

- REF 1289 Syringe 2 × 4 g
- REF 1283 Syringe 3 × 4 g
- REF 1288 Syringe 2 × 4 g fluorescent

#### Clip Flow

- REF 1282 Syringe 2 × 1.8 g, accessories
- REF 2148 Application cannulae type 46, 100 pcs.



VOCO GmbH  
 Anton-Flettner-Straße 1-3  
 27472 Cuxhaven  
 Germany  
 Freecall: 00 800 44 444 555  
 Fax: +49 (0) 4721-719-140  
 info@voco.com  
 www.voco.dental

Available from: