

SCIENTIFIC REPORT

Bifluorid 12 – Sealing of dentinal tubules

VOCO GmbH, Knowledge Communication Department

Anton-Flettner-Str. 1-3
27472 Cuxhaven, Germany

Tel.: +49 (0)4721-719-1111
Fax: +49 (0)4721-719-109

info@voco.de
www.voco.com



To achieve good results in the treatment of hypersensitivity a tight sealing of exposed dentinal tubules is essential. One way to visualize such a sealing is the Confocal Laserscanning Microscopy (CLSM).

Confocal Laserscanning Microscopy of dentine treated with Bifluorid 12

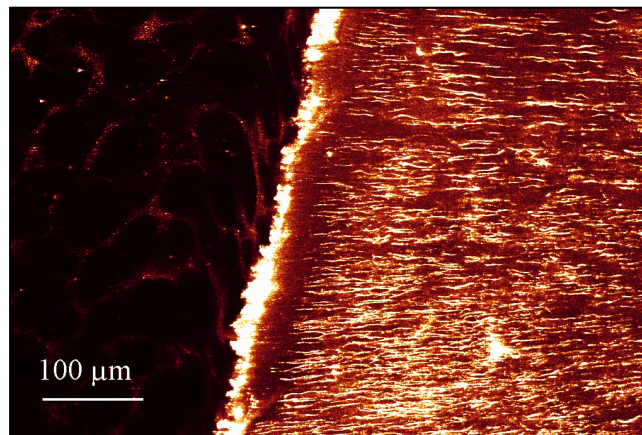


Figure 1: Dentine after application of Bifluorid 12, PD Dr. T. Pioch, University of Heidelberg, Germany

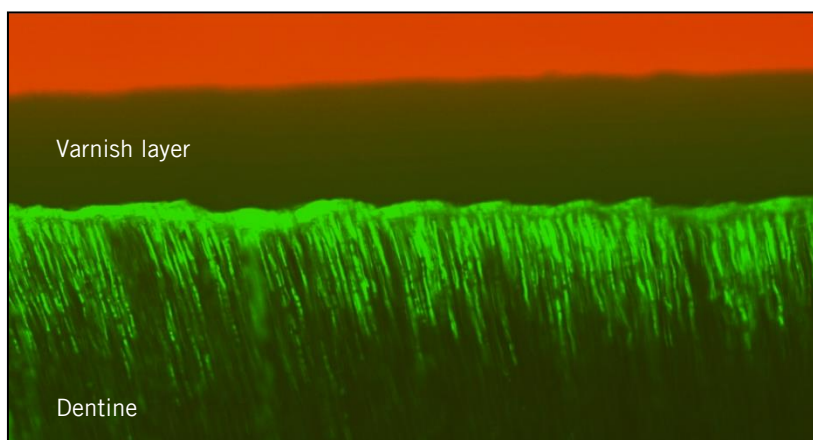


Figure 2: Dentine after application of Bifluorid 12, Prof. Dr. J. U. Echevarría University of Cordoba, Argentina

Conclusion: Application of Bifluorid 12 leads to a tight sealing of dentinal tubules. The calcium fluoride tags built in this process penetrate the tubules to a depth of up to 100 µm.