

# Bifluorid 10®

FLUORIDE VARNISH FOR THE TREATMENT OF DENTAL  
HYPERSENSITIVITY

## THE COMBINATION OF SODIUM AND CALCIUM FLUORIDE

### A broad range of applications for a fluoride varnish

You can encounter many causes of your patients' dentine hypersensitivities during your daily work. Amongst other conditions, dentine hypersensitivities can be caused by:

- exposed cervical areas and crown margins
- sealing cavity margins after restoration
- grinding facets
- heavy dental enamel abrasion in the area of braces and pre-contacts
- sensitivity after professional cleaning

Bifluorid 10 is the ideal preparation to effectively alleviate these complaints. Bifluorid 10 is ideally suited for accelerated remineralisation and fluoridation of tooth substance. Bifluorid 10 also prevents secondary caries after restoration, especially after employment of the etching technique.



Fluoridation with Bifluorid 10 after a professional cleaning



### Efficient, well-tolerated, quick

Bifluorid 10 features a varnish base made from carefully tested materials and the unique combination of 5 % sodium fluoride (equal to 22,600 ppm fluoride) and 5 % calcium fluoride. The special combination of the two fluoride salts permits both an immediate high release of fluoride (through NaF) and long-term fluoridation (through  $\text{CaF}_2$ ). The easily soluble sodium fluoride provides the quick release of fluoride ions, that are converted to calcium fluoride on the tooth surface to effectively support remineralisation. The antisoluble calcium fluoride contained in the varnish provides for lasting retention on the tooth surface. This ensures long-term fluoridation. The coactions of the two fluorides through the formation of calcium fluoride depots facilitate long-term conversion of hydroxyl apatite into fluorapatite. Damaged enamel surfaces are thus effectively protected.

The excellent compatibility of Bifluorid 10 has been proven innumerable times around the world. This is due not only to the use of select ingredients, but also to a composition free from methacrylates and glutaraldehyde.

Bifluorid 10 adheres especially well to enamel and dentine and dries quickly, thanks to its coordinated composition. The treated tooth is immediately protected against harmful external influences. The dentinal tubules are effectively sealed through the precipitation of calcium fluoride. Sustained protection against chemical, thermal and mechanical stimuli is the result your patients will notice immediately.

The treated teeth are not discoloured by the thinly applied, transparent varnish. The aesthetics are not affected. Bifluorid 10 remains on the treated surfaces for an extended period of time with proper application and positive compliance from the patients. The varnish adheres especially well to enamel for a long time, particularly in vulnerable places such as approximal areas and fissures. Bifluorid 10 is economical to use and permits up to 300 applications from the 4 g bottle.

## Bifluorid 10®

### INDICATIONS FOR BIFLUORID 10®

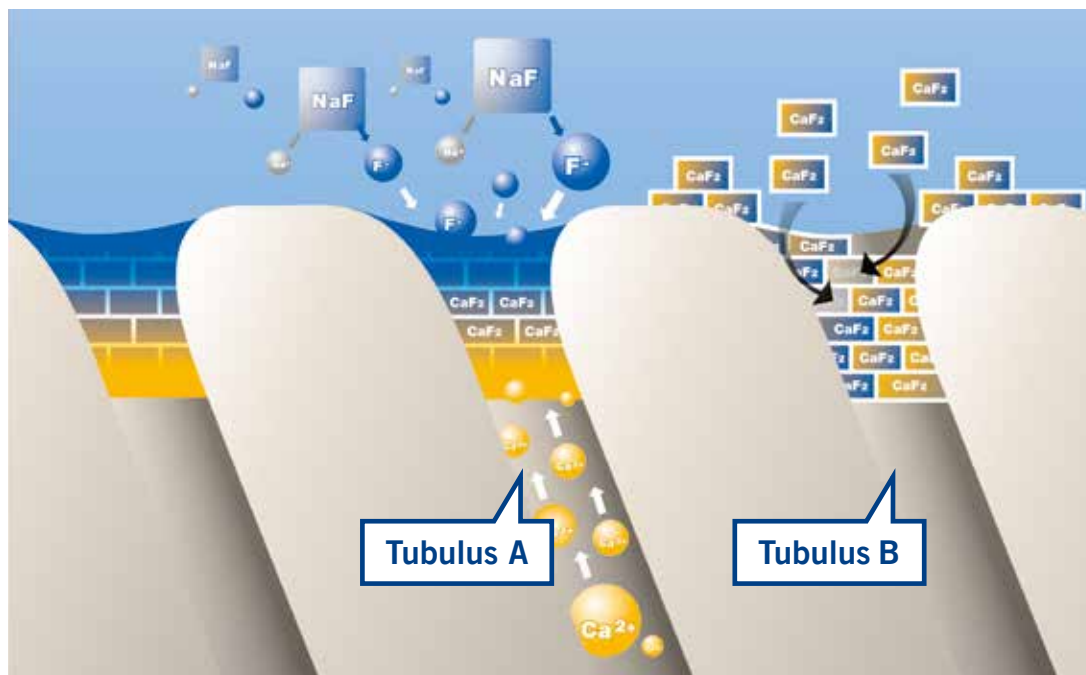
#### Optimal protection after professional tooth cleaning

Professional tooth cleaning is a firmly established component of dentistry. An important work step in this procedure is polishing the teeth. The enamel cuticle is removed in the process, which leaves the tooth accordingly vulnerable. Bifluorid 10, applied after polishing, immediately protects the tooth and replaces the natural fluoride compounds on its surface.

#### Bifluorid 10® – the ideal addition to whitening

The professional whitening of teeth in the dental surgery is becoming increasingly prevalent. Sensitivities triggered by the whitening process are often an undesirable side effect. With Bifluorid 10, the occurrence of sensitivities can effectively be prevented, even before beginning the whitening treatment. Bifluorid 10 can be used during the entire whitening treatment without impairing the whitening effect.

#### Mode of action of the sodium and calcium fluoride contained in Bifluorid 10®



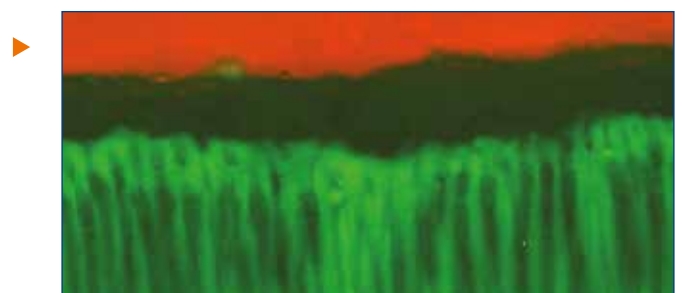
##### Tubulus A:

Formation of calcium fluoride by the reaction of the sodium fluoride contained in Bifluorid 10 with calcium ions contained in the saliva and dentinal tubuli liquid

##### Tubulus B:

Storage of the calcium fluoride contained in Bifluorid 10 in the tooth substance and tubuli

In dentine hypersensitivity, treatment success results from effective sealing of exposed dentinal tubules. Confocal laser scanning microscopy (KLSM) makes such a seal visible. The calcium fluoride cones shown here penetrate up to 100 µm deep into the tubules.



Source: Prof. Jorge Uribe Echevarría DDS, PhD, MS, Universidad Nacional de Córdoba, Argentina.

# Bifluorid 10®

## THE PARTNERS

### Indications

- Treatment of all hypersensitivities (dentine hypersensitivity) including
- cervical area and crown margins
  - sensitivity after professional cleaning and calculus removal
  - tooth surfaces after preparation and / or grinding
  - worn occlusal surfaces and teeth carrying clasps
  - after injury of the enamel (e.g. fractures, chips)
  - sealing cavity margins after restoration, especially after the etching technique has been employed
  - as a dentine protection / lining under amalgam fillings



### Presentation

#### Bifluorid 10®

- |          |   |
|----------|---|
| REF 1615 | Bottle 4 g, Solvent bottle 10 ml                      |
| REF 1616 | Bottle 10 g   |
| REF 1617 | Bottle 3 x 10 g, Solvent bottle 10 ml, Pele Tim No. 1 |
| REF 1618 | SingleDose 50 pcs., accessories                       |
| REF 1619 | SingleDose 200 pcs., accessories                      |
| REF 1032 | Solvent bottle 10 ml                                  |
| REF 2247 | Single Tim, application brushes, 100 pcs.             |

### Advantages

- Immediately desensitising
- Formation of a protective coat against thermal and mechanical influences
- Transparent – no discolouration of teeth
- Special varnish base reinforces long-term effect and deep fluoridation
- Economical and simple – high yield, low cost, fast application
- Dries quickly
- Colophony-free
- Contains 5 % sodium fluoride (equal to 22,600 ppm fluoride) and 5 % calcium fluoride
- Bleaching compatible, reducing sensitivity without hindering the bleaching treatment

Effective application  
with Pele Tim foam  
pellets



#### Pele Tim

- |          |       |                |
|----------|-------|----------------|
| REF 2250 | No. 0 | 3.000 x ø 3 mm |
| REF 2252 | No. 1 | 3.000 x ø 4 mm |
| REF 2253 | No. 2 | 1.000 x ø 5 mm |
| REF 2254 | No. 3 | 500 x ø 8 mm   |
| REF 2255 | No. 4 | 500 x 6 x 8 mm |

VOCO GmbH  
Anton-Flettner-Straße 1-3  
27472 Cuxhaven  
Germany

Freecall: +800 44 444 555  
Fax: +49 (0) 4721-719-140

info@voco.com  
www.voco.dental

Available from: